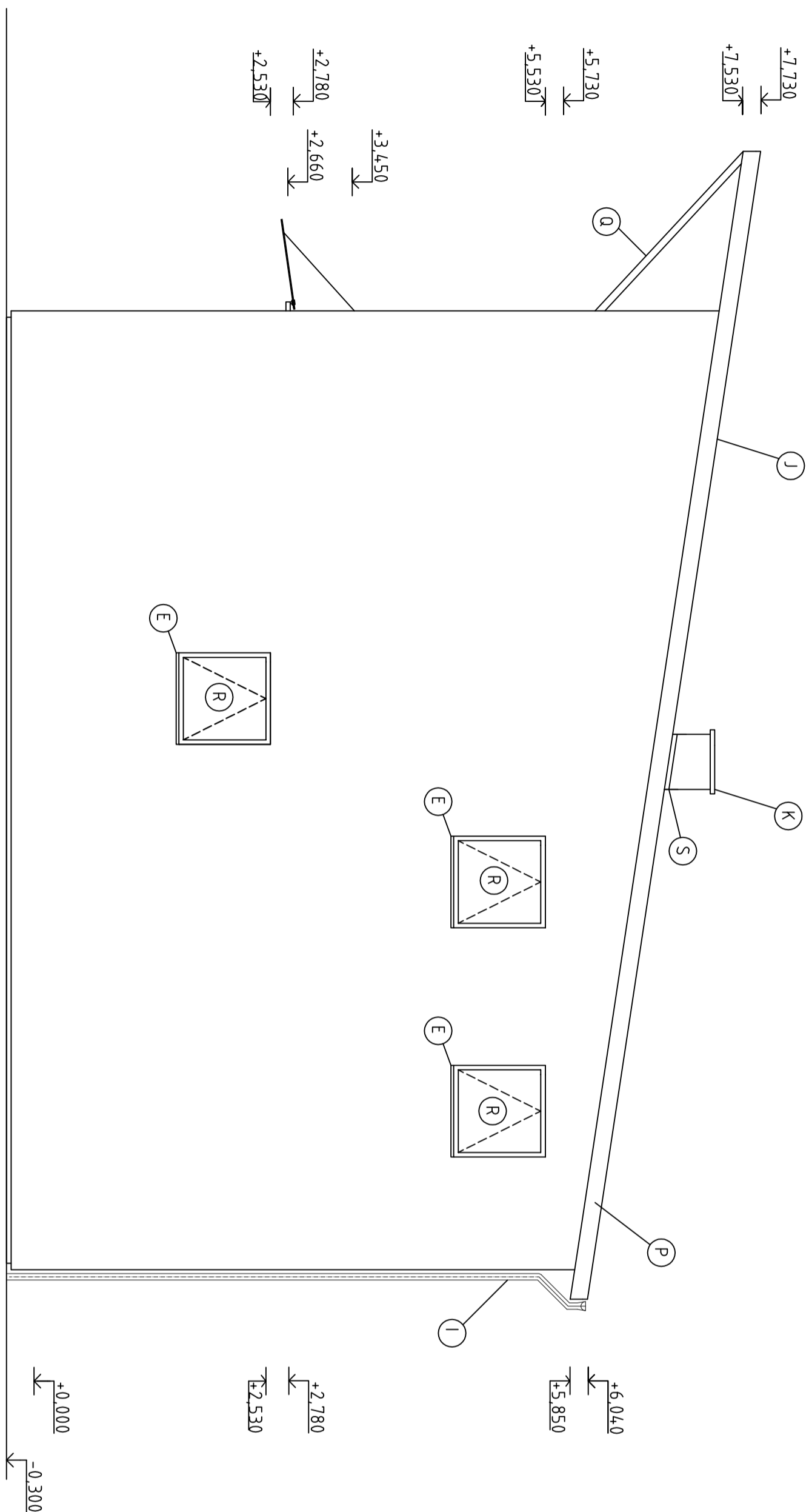
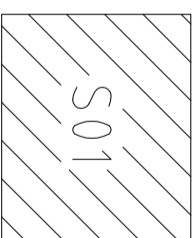



- (A) WOODEN TWO WING EUROWINDOW 1V78, DOUBLE GLAZING,  $U_w=1,1 \text{ W/(m}^2\text{K)}$
- (B) WOODEN FACADE, THERMWOOD
- (C) WOODEN ONE WING EUROWINDOW 1V78, DOUBLE GLAZING,  $U_w=1,1 \text{ W/(m}^2\text{K)}$
- (D) EARTH ANCHOR KRINNER KSF U 66x865-91
- (E) TIN SMITH WORK FROM GALVANIZED METAL, BLACK
- (F) WOODEN ENTRANCE DOOR EURO 4-88,  $U_d=0,82 \text{ W/(m}^2\text{K)}$
- (G) TIMBER STRUCTURE OF TERRACE, SPRUCE, PAINTED WITH PROTECTIVE COLOUR
- (H) TIMBER RAILING, SPRUCE, PAINTED WITH PROTECTIVE COLOUR
- (I) METAL SHEET COVERING Lindab SRP Click , WINE RED
- (J) GUTTER SYSTEM LINDAB RAINLINE - COATED METAL, BLACK
- (K) METAL SHEET COVERING Lindab SRP Click, WINE RED
- (L) CHIMNEY HELUZ KLASIK - HAK, WITH HALF VENTILATION SHAFT, 400x600mm
- (M) FIXED WINDOW COMBINED WITH TWO WING EUROWINDOW
- (N) WOODEN EURO WINDOW 3000x1500 mm, DOUBLE GLAZING,  $U_w=1,1 \text{ W/(m}^2\text{K)}$
- (O) CORNER WOODEN WINDOW, DOUBLE GLAZING,  $U_w=1,1 \text{ W/(m}^2\text{K)}$
- (P) WOODEN BALCONY DOORS, DOUBLE GLAZING,  $U_w=1,1 \text{ W/(m}^2\text{K)}$
- (Q) NPSRP METAL FINISHING OF SHED ROOF, LINDAB
- (R) TRUSS SYSTEM, COVERED WITH PROTECTIVE COLOUR
- (S) WOODEN WINDOW 1000x1000mm, DOUBLE GLAZING,  $U_w=1,1 \text{ W/(m}^2\text{K)}$
- (T) METAL SHEET FLASHING OF CHIMNEY, WINE RED, LINDAB



c)			
b)			
d)			
NO.	REVISION/ISSUE	CHANGE MADE BY	SIGNATURE DATE



0,000 = 263,300 m.a.s.l.B.L. / COORDINATION SYSTEMS - JTSK

TYPE OF WORK		BACHELOR THESIS		 <div>UNIVERSITY OF PARDUBICE FACULTY OF CIVIL ENGINEERING DEPARTMENT OF CIVIL ENGINEERING</div>	
AUTHOR	Viktor Gach				
SUPERVISOR	Ing. František Valkeý Ph.D.				
BUILDER	Jakub Smolný, Rašínova 92, 500 11, Hradec Králové				
BUILDING PLOT	cadastral area: Vysoká nad Labem, plot 244/3				
NAME OF THE CONSTRUCTION	FAMILY RESIDENCE				
BUILDING	SO 01			FORMAT	4 A4
PART	D.1.1 ARCHITECTURAL - CONSTRUCTIONAL SOLUTION			DATE	05/2015
TYPE OF WORK	EAST VIEW			DEGREE PD SCALE	DEC 1:50
				NO. DRAWING	D.1.1.10